

OTR

TYRES WHEELS AXLES

**OTR
GROUP**

**THE ULTIMATE
LSW UPGRADE**



W 1400/30B4S



CATALOGUE CONTENTS

The Acronyms of Ag Tyres	4
Proper Inflation	5
Grower Behavior Stats	6
The Only Acronym You Need	7
Rethink Your Duals	8
The LSW Advantage	11



THE ACRONYMS OF AG TYRES

As farm equipment manufacturers continue to introduce larger, heavier and more powerful equipment each year, the space in which to fit the tyre has not changed. This has necessitated that the tyre industry move toward new technologies that allow the same size tyre to carry heavier loads at lower inflation pressures. The result?

MORE TYRE ACRONYMS

	TRA TYRE & RIM ASSOCIATION	IF INCREASED FLEXION	VF VERY HIGH FLEXION	CFO CYCLICAL FIELD OPERATION	LSW® LOW SIDEWALL
Description	The standardizing body for the tyre, rim, valve & allied parts industry in the United States. Called for IF/VF/CFO being standard across all brands	Carries 20% higher loads at same inflation pressure as standard tyres or same loads at 20% lower inflation pressure as standard tyres.	Carries 40% higher loads at same inflation pressure as standard tyres or same loads at 40% lower inflation pressure as standard tyres.	Handles 55% higher loads when traveling less than 10 mph, for use on combines and grain carts.	Larger rim diameter than standard tyres, meets TRA standards for VF/CFO in terms of load/inflation capabilities.
Benefit		Reduces soil compaction when properly inflated.	Reduces soil compaction when properly inflated.	Reduces soil compaction & reduces need to adjust inflation during significant changes in weight during harvest.	Reduces soil compaction when properly inflated, minimizes road lope & power hop regardless of inflation pressures.
Caveats		Only effective if pressure is adequately maintained by application & weight, increased flex can cause problems with road lope & power hop quality if inflation is not maintained.	Only effective if pressure is adequately maintained by application & weight, increased flex can cause problems with road lope & power hop quality if inflation is not maintained.	Compaction reduction gains are only realized if proper inflation pressures are maintained.	Requires appropriate size of wheel.
Brand		Titan/Goodyear, Michelin, Firestone, Mitas & Trelleborg.	Titan/Goodyear, Michelin, Firestone, Mitas & Trelleborg.	Titan/Goodyear, Michelin, Firestone, Mitas & Trelleborg.	Titan/Goodyear.

“Although LSW tyres are compatible with VF/CFO tyres in their load and inflation capabilities (and are recognized by TRA), we do not want to label them as VF/CFO, simply because the benefits of LSW far exceed that of our competitors’ VF/CFO offerings.”



**Scott Sloan, Agricultural Product Manager,
Titan Tire Corp**

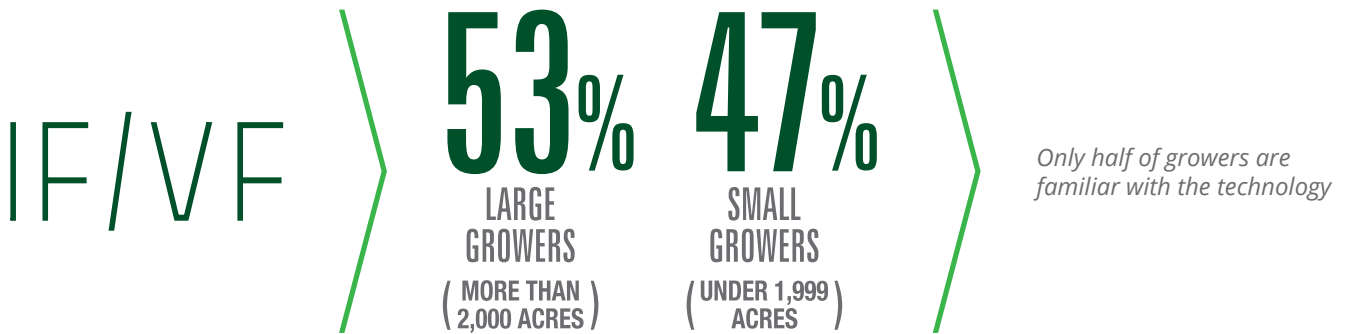


PROPER INFLATION

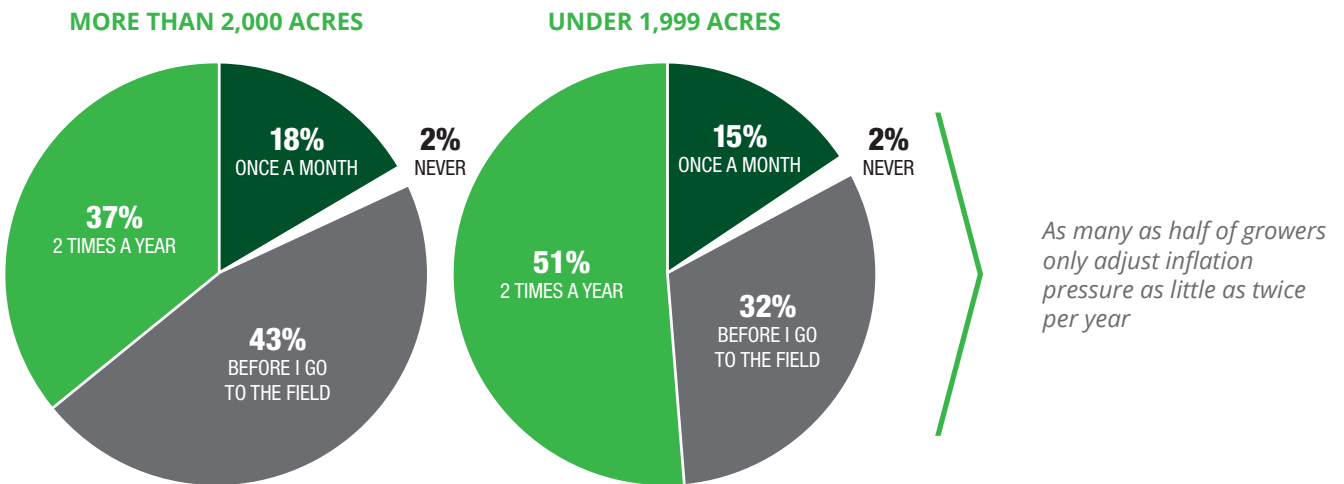
IF & VF TECHNOLOGIES ARE ONLY EFFECTIVE IF PROPERLY INFLATED & OFTEN THEY'RE NOT!

Despite IF and VF being a long-standing industry-wide standard, grower familiarity is still relatively low, suggesting there is a need for education on the topic, particularly given grower inflation practices, or sometimes, lack thereof. Below are results from a recent industry survey.*

WHAT IS YOUR LEVEL OF FAMILIARITY WITH THE FOLLOWING TYRE TECHNOLOGIES?



HOW OFTEN DO YOU CHECK INFLATION PRESSURES ON YOUR TRACTOR & IMPLEMENT TYRES?



GROWER BEHAVIOR STATS

A third party study done on behalf of Titan International revealed the most common frustrations growers have with ag tyres. Road lope was the biggest issues faced by both large & small growers, followed by power hop and soil compaction.*

ROAD LOPE



38%
LARGE
GROWERS

47%
SMALL
GROWERS

Experience issues with road lope

POWER HOP



9%
LARGE
GROWERS

22%
SMALL
GROWERS

Experience issues with power hop

SOIL COMPACTION



11%
LARGE
GROWERS

12%
SMALL
GROWERS

Experience issues with soil compaction

SOLUTION:

Low Sidewall (LSW) technology features a shorter sidewall, resulting in less sidewall recoil, more stability, and reduced power hop and road lope. Growers get the flotation benefits of reduced inflation pressures, with a smoother ride and full load capacity.

*Survey sent to 24,981 growers with less than 2,000 acres and 9,411 growers with more than 2,000 acres in April 2013. A total of 1,044 growers completed the survey.

THE ONLY ACRONYM YOU NEED

Low Sidewall (LSW) technology features a larger rim diameter and smaller sidewall than a standard tyre, while maintaining the same outside diameter and weight load capacity at 40% less inflation pressure than standard tyres. The larger rim and smaller sidewall of LSW provides much greater stability for equipment.

LOWER PRESSURE

LSW allows the tyres to run at 40% less inflation pressure vs. standard tyres. Lower pressure minimizes soil compaction.

SPEED

LSW helps reduce bouncing and road loping, which results in increased transport speeds between fields, keeping your operation productive and profitable.

SMOOTH RIDE

LSW provides a smoother ride both in the field and on the road. The smaller sidewall reduces recoil and bouncing that results in road lope and power hop.

STABILITY

The increased rim diameter of LSW reduces machine sway, resulting in greater lateral stability on hillside conditions without the need to increase inflation pressures.

SAFETY

Less bounce and greater stability around curves results in improved operator comfort and safety.

FUEL ECONOMY

LSW reduces sidewall deflection, which helps increase the rolling circumference for improved fuel economy.

LOW SIDEWALL



STANDARD



LSW[®]
Low Sidewall Technology[™]

- Proper inflation pressure is important, but not always realistic
- IF/VF is only effective if inflated to load/application
- IF/VF causes problems with road lope & power hop if not properly inflated
- IF/VF can cause soil compaction if overly inflated
- LSW incorporates all the benefits of VF/CFO technology, but provides added stability, reduces power hop & road lope allowing for maximum transport speeds

40% LESS INFLATION PRESSURE

RETHINK YOUR DUALS

Tractors are heavier and more powerful than ever before, and as a result, issues associated with soil compaction are becoming an increasingly common problem. Despite this, many continue to run tyres that only worsen the problem - whether by choice or perceived lack of other options. But there are options out there, and growers need to fight for their right to float.

"It's all about the footprint. Think about it this way - if you walk out into the field on ice skates, you're going to sink right into the mud. With boots, you're good to go," says Scott Sloan, agricultural product manager for Titan International and Goodyear Farm Tyres. "I don't see too many guys walking around the field in ice skates, but I do

see a lot of guys running narrow duals when they don't need to. If you're not running the machine between the rows post-emergence, then there's really no reason you shouldn't be running Extreme Flotation tyres."

An intensive study* revealed that only about 37 percent of American growers have a need to frequently run between the rows postemergence. These 37 percent are the good candidates for running narrow duals on their tractors. However, an estimated 75 percent of MFWD tractors still come from the factory with narrow duals. This means a large percentage of growers are running duals when it's unnecessary.

37%

OF GROWERS NEED NARROW DUALS FOR POSTEMERGENCE FIELD WORK

73%

OF GROWERS RARELY RUN BETWEEN THE ROWS AND SHOULD BE RUNNING FLOTATION TYRES

*Stats garnered from November 2015. Survey conducted via Agweb, involving 273 grower respondents.

COMPARE THE FOOTPRINT



NARROW DUALS

A common factory setup on MFWD tractors puts 480/80R50 duals on the rear and 420/85R34 duals on the front, resulting in the following:

- Total contact area: 2,176"
- 12 psi rear / 8 psi front



GOODYEAR® EXTREME FLOTATION™

An alternative to the factory dual setup is to run Goodyear LSW1100/45R46 single rears and LSW1000/40R32 single fronts, resulting in the following:

- Total contact area: 2,716" (20% improvement)
- 10 psi rear / 6 psi front
- Lower overall width for easier roading
- Sharper turning radius

DITCH THE DUALS

LSW[®] EXTREME FLOTATION[™] VS. NARROW DUALS

- 20% improvement to footprint for reduced compaction and improved traction with LSW[®]
- Lower inflation pressures for reduced soil compaction with LSW[®]
- Reduced road lope and power hop with LSW[®]
- Narrower profile for roading (6" narrower)
- Shorter turning radius (3ft)

LSW[®]
Low Sidewall Technology[™]



BEFORE



AFTER



BEFORE



AFTER



BEFORE



AFTER



BEFORE



AFTER



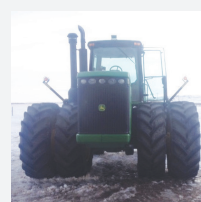
BEFORE



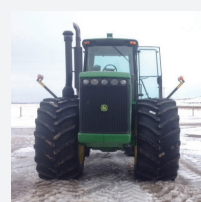
AFTER



BEFORE



AFTER



THE ULTIMATE UPGRADE

MAKE THE SWITCH TO LSW®



LSW® BENEFITS



NATION WIDE FIELD TECHNICIAN SUPPORT

You're never alone in the field with our skilled tyre and wheel experts standing by to assist you.



REDUCED SOIL COMPACTION

With ability to carry loads at 40% lower inflation pressures.



IMPROVED TRACTION

With greater stability and footprint, providing more power to the ground.



REDUCED POWER HOP

With larger wheel diameter that dampens recoil in high draw-bar applications.



REDUCED ROAD LOPE

Faster, smoother transport speeds between fields.



STUBBLE-RESISTANT

Compounding backed by warranty.



AMERICAN MADE

All Titan and Goodyear Farm Tyre products are proudly made in America.

LSW® EQUIPPED MACHINES



4WD AND MFWD TRACTORS

Whether conducting pre-emergence field work or working in between the rows, tractors experience improved transport speeds and turning radius.



SPRAYERS

As sprayer tanks continue to grow to sizes in excess of 1,300 gallons, newer technologies are becoming essential for carrying the load and reducing soil compaction. With LSW®, growers don't have to make sacrifices in ride quality and stability.



COMBINES

LSW® tyres are built to withstand the heavy loads of today's high-horsepower combines while requiring 40% less inflation pressures vs. conventional tyres.

THE LSW ADVANTAGE

In addition to spreading far less pressure over a much wider footprint (and thus causing less soil compaction), the added stability of Low Sidewall (LSW) technology provides many other benefits to running Extreme Flotation tyres.

LSW technology features a larger wheel diameter and smaller sidewall than a conventional tyre. This decreases the likelihood for sidewall recoil, which drastically improves ride quality and stability, and reduces power hop and road lobe.

LSW
Low Sidewall Technology™

**LARGER
WHEEL
DIAMETER**

**SMALLER
SIDEWALL**



TESTED AND PROVEN

University testing shows that the 20 percent increase in contact area of the LSW super singles at lower inflation pressures reduces soil compaction when compared to a traditional dual setup.

TWO WAYS TO MAKE THE SWITCH

If you're interested in getting set up with Extreme Flotation tyres for your MFWD tractor, you can work with your equipment dealer in a couple different capacities:

1. Order the tractor "barefoot" (without the wheel & tyre assembly). The OEM will then provide you with a credit for the assembly, which can be used on an Extreme Flotation setup.
2. Talk to your dealer about exchanging your current conventional dual setup for an Extreme Flotation assembly. Many dealers offer to buy the standard wheel/tyre assemblies from you and apply the credit toward a new set of Extreme Flotation tyres.

HEAR IT FROM THE REAL DEAL

"With the old tyres, we dealt with turning problems and a rough ride. This setup is a much better ride with the air pressure. It's made a big difference in the way the tractor operates."

Gerald Foster, Tractor operator for Sackett Ranch Stanton, Michigan



TOP 5 WAYS TO REDUCE SOIL COMPACTION

1. Minimize passes across the field during wet field conditions and try to stay on the same tracks as previous passes. Adjust wheel spacing to match on all equipment, if possible.
2. Rotate frequently with perennial crops such as alfalfa or clover, which don't require tillage, provide deep rooting structures and help dry out the soil without requiring multiple equipment passes throughout the season.
3. Reduce tillage and/or adjust tillage depth in order to avoid creating a tillage pan of compacted soil.
4. Properly inflate tyres, because the lower the air pressure of a tyre, the less ground disturbance it will create. Over-inflated tyres apply more pounds per square inch of pressure to the ground, which increases compaction.
5. Select the right tyres for the job. A variety of new technologies and flotation sizes now exist to help remedy the increased problem of soil compaction as new-model agricultural equipment continues to grow in size and weight.

VISIT

www.lswadvantage.com to learn more about LSW and Extreme Flotation technology, and see what real farmers have to say about making the switch.



OTR AUSTRALIA PTY LTD

1300 791 672

www.otraustralia.com

sales@otraustralia.com

Version 4.0

Updated October 2024



BELLEVUE WA

113 Clayton Street, Bellevue WA, 6056

p: (08) 9250 8949 | e: sales@otrtyre.com



KEWDALE WA

12 Bradford Street, Kewdale WA, 6105

p: (08) 9253 6100 | e: sales@otraustralia.com



KALGOORLIE WA

56 Great Eastern Highway, Kalgoorlie WA, 6430

p: (08) 9021 4404 | e: sales@otrtyre.com



KARRATHA WA

51 Pemberton Way, Karratha WA, 6714

p: (08) 9144 4887 | e: sales@otrtyre.com



PORT HEDLAND WA

14 Murrena Street, Wedgefield WA, 6721

p: (08) 9172 5984 | e: sales@otrtyre.com



GERALDTON WA

239 Place Road, Webberton WA, 6530

p: (08) 9964 6988 | e: sales@otrtyre.com



GERALDTON WA

141 Flores Road, Webberton, WA 6530

p: (08) 9932 6174 | e: sales@otraustralia.com



YATALA QLD

34 Alloy Street, Yatala QLD, 4207

p: (07) 3803 8333 | e: sales@otraustralia.com



EMERALD QLD

12-16 Kyle Street, Emerald QLD, 4720

p: (07) 4987 4784 | e: sales@otraustralia.com



MOUNT ISA QLD

38-40 Barkly Highway, Mount Isa, QLD 4825

p: (07) 4743 6633 | e: sales@otraustralia.com



GLADSTONE QLD

42 Callemondah Drive, Gladstone, QLD 4680

p: (07) 4978 7233 | e: sales@otraustralia.com



MACKAY QLD

33-35 Connors Road, Paget, QLD 4740

p: (07) 4952 2797 | e: sales@otraustralia.com



BRISBANE QLD

9 Navigator Place, Hendra, QLD 4011

p: (07) 3868 4089 | e: sales@otraustralia.com



SYDNEY NSW

100 Brabham Drive, Eastern Creek, NSW 2766

p: (02) 9676 4099 | e: sales@otraustralia.com



MUSWELLBROOK NSW

26 Strathmore Road, Muswellbrook, NSW 2333

p: (02) 6541 3207 | e: sales@otraustralia.com



MILDURA VIC

36-42 Tenth Street, Mildura, VIC 3500

p: (03) 5018 7800 | e: sales@otraustralia.com