

# MICHELIN XHA2

Give comfort  
to your bottomline



**Enhanced productivity**  
**Enhanced safety**  
**Enhanced comfort**  
**Better for environment**



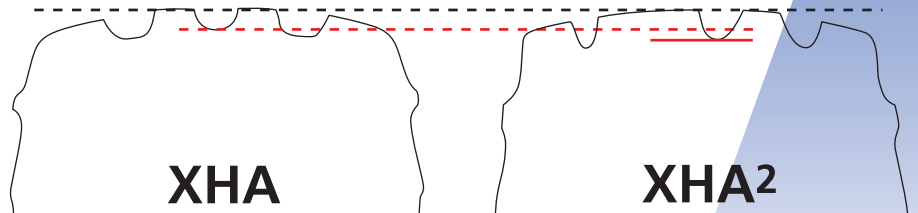
# MICHELIN XHA2

## The new generation XHA, the MI

### ➤ ENHANCED PRODUCTIVITY

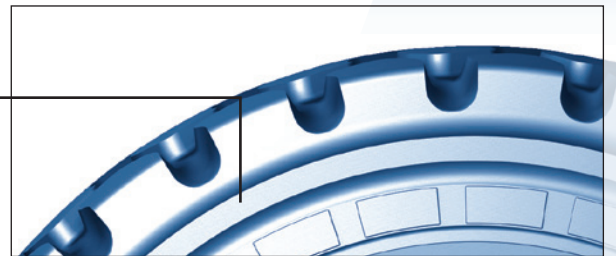
#### LONGER TREAD LIFE

- Up to 9% deeper tread pattern
- Increased tread volume for additional wear life
- Increased resistance to damages



### MORE SIDEWALL PROTECTION

- New sidewall design for enhanced reinforcement and protection



### CROWN PROTECTION

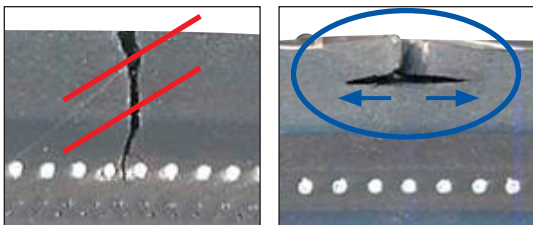
- Increased tread depth
- Robust shoulder design



### OPTIMISED RETREADING

- Flatter protection plies enabling easier buffing
- Strong casing reliability

### ➤ ENHANCED SAFETY



### REDUCED FLATS DUE TO SIDEWALL CUTS

- Special rubber compound prevents small cuts from expanding towards the air chamber



### MAXIMIZED STABILITY

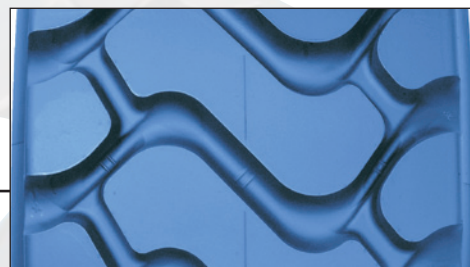
- Larger footprint

# CHELIN reference for L3 loaders

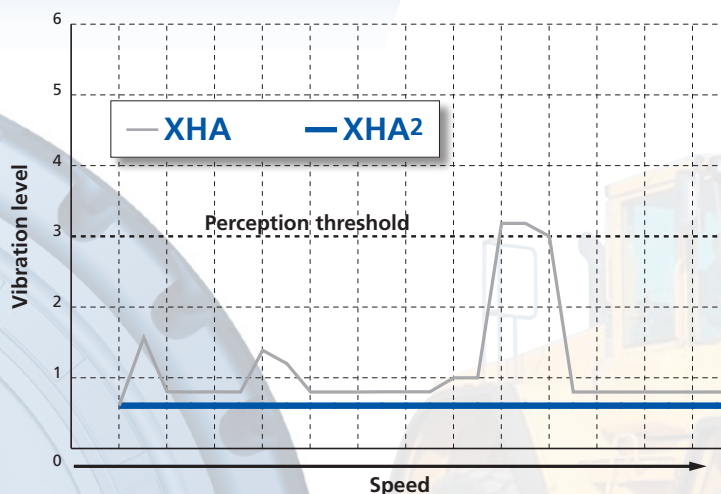
## ➤ ENHANCED COMFORT

VIBRATIONS REDUCED BY 50% OR MORE!

- New patented tread design enables a smooth contact on the ground



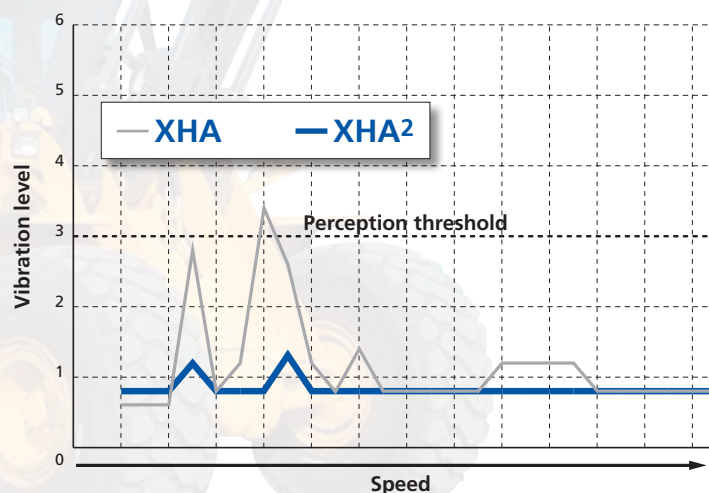
### VIBRATION TEST (unloaded machine)



#### TEST CONDITIONS:

Loader power: 200 kw  
Total weight unloaded: 26 000 kg  
Total weight loaded: 35 500 kg  
Tyre size: 26.5 R 25 XHA2  
Tyre Pressure: Front: 3.75 bar  
Rear: 2.25 bar

### VIBRATION TEST (loaded machine)



## ➤ BETTER FOR THE ENVIRONMENT

REDUCED TYRE WEIGHT THANKS TO INNOVATIVE DESIGN AND MATERIALS

- reduced fuel consumption
- fewer raw materials consumed

LONGER TREAD LIFE AND OPTIMISED RETREADING

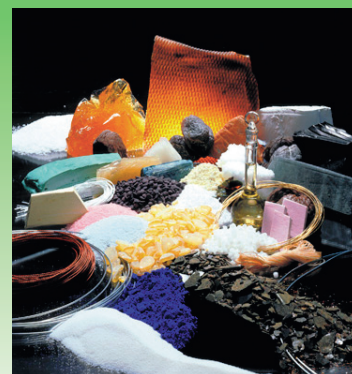
- fewer tires in the scrap pile

FREE OF AROMATIC OILS

ISO 14001 CERTIFICATION

- MICHELIN XHA2 tyres are manufactured in our ISO 14001 certified factories, whose environmental impact has been reduced of more than 16% since 2005.

(Michelin Environmental Footprint)



# MICHELIN XHA2



➤ SAME EXCELLENT MOBILITY AND TRACTION AS XHA

➤ COMPATIBLE WITH XHA

➤ NON DIRECTIONAL TREAD PATTERN

## RANGE FOR L3 LOADERS

SIZES	TREAD DEPTH	
	mm	32 <sup>rd</sup> inch
15.5 R 25 XHA TL *	26	32.8
17.5 R 25 XHA TL *	29	36.5
20.5 R 25 XHA2 TL * 186 A2	33	42
23.5 R 25 XHA2 TL * 195 A2	36	45
26.5 R 25 XHA2 TL ** 209 A2	41	52
29.5 R 25 XHA2 TL ** 211 A2	43	54
<b>NEW</b> 875/65 R 29 XHA2 TL ** 214 A2	49	62



855 200 507 RCS Clermont-Ferrand  
Edition 7448 Gb (2012-04) - Ref. 0509253  
fusium 125403 - Tél. 04 73 73 25 25

MAXIMISED RETREADABILITY THANKS TO THE EXTREMELY ROBUST CASING (##)

(##) provided that the worn tyre answers criteria of retreading and/or repair.

### BENEFITS OF THE MICHELIN® RADIAL TECHNIQUE

- longer tyre life
- better traction on all types of surface
- lower fuel consumption
- improved comfort
- increased resistance to punctures / flats
- increased heat resistance

